



cellate ■■■■

A Unique Opportunity

Kickstart your next Commercial, Residential,
Industrial or Community Infrastructure Project

WHY

cellate



Exclusive rights

We own the rights to the fibre steel technology that we use to build and construct each project.



If you can dream it, we can build it

We can apply our fibre steel technology to build and/or construct almost any building/structure that you can imagine or design.



Sustainability-focused

We are interested in sustainable projects that have a measurable and positive outcome for the community.



Extensive, global experience

We have a long history in delivery and project management of construction and infrastructure projects around the world.



Expert experience of steel fibre technology

We have expert experience in the development and manufacture of steel fibre technology and our unique precast system.



Leaders in turnkey projects

We are a global leader in the delivery of turnkey projects in all fields of project development and construction.



Partnership with GPFI[®]

We can fully fund your project in partnership with the Global Project Funding Initiative[®] ("GPFI") subject to certain criteria.

cellate ■■■■

”

If you can dream it, we can build it.



Dubai Creek Golf Course

Architect, Thomas Bjorn

Dubai Creek Golf Course, with its striking **clubhouse** was designed to mirror the sails of the Arab dhow, and has become one of the most recognized architectural landmarks in the world.

What sets this iconic structure apart is not just its distinctive design, but the material that made it possible — **Cellate**.



Our patented fibre steel technology was integral to the construction of the clubhouse's sail-like features, offering the ideal combination of strength, flexibility, and durability to meet the project's climate and design challenges.

Cellate's use in the **Dubai Creek Clubhouse** is a testament to its power and versatility, proving that even the most ambitious architectural visions can be brought to life with the right building materials.



The significance of this landmark goes beyond architecture — *its iconic sails have become so synonymous with Dubai that they now feature on the UAE's currency.*



Discover More About the Iconic Dubai Creek Clubhouse

A promotional image for the Dubai Creek Golf & Yacht Club. On the left, a portrait of Brian Johnson, a man with grey hair and a mustache, wearing a light-colored suit and a purple patterned tie. The background on the right shows the modern, white, sail-shaped clubhouse of the Dubai Creek Golf & Yacht Club against a blue sky with clouds. Palm trees are visible in the distance. The text 'Dubai Creek Golf & Yacht Club by Brian Johnson of GAJ Architects' is at the top left. The title 'DUBAI CREEK GOLF CLUB' is in large, bold, white letters with a black outline. A red button with white text 'CLICK HERE TO WATCH' is in the center. A 'Share' button with a white arrow icon is at the top right. A 'Watch on YouTube' logo is at the bottom left.

Dubai Creek Golf & Yacht Club by Brian Johnson of GAJ Architects

**DUBAI CREEK
GOLF CLUB**

CLICK HERE TO WATCH

Share

Watch on  YouTube

USES FOR

cellate ■■■



**Marina & Floating
Walkways**

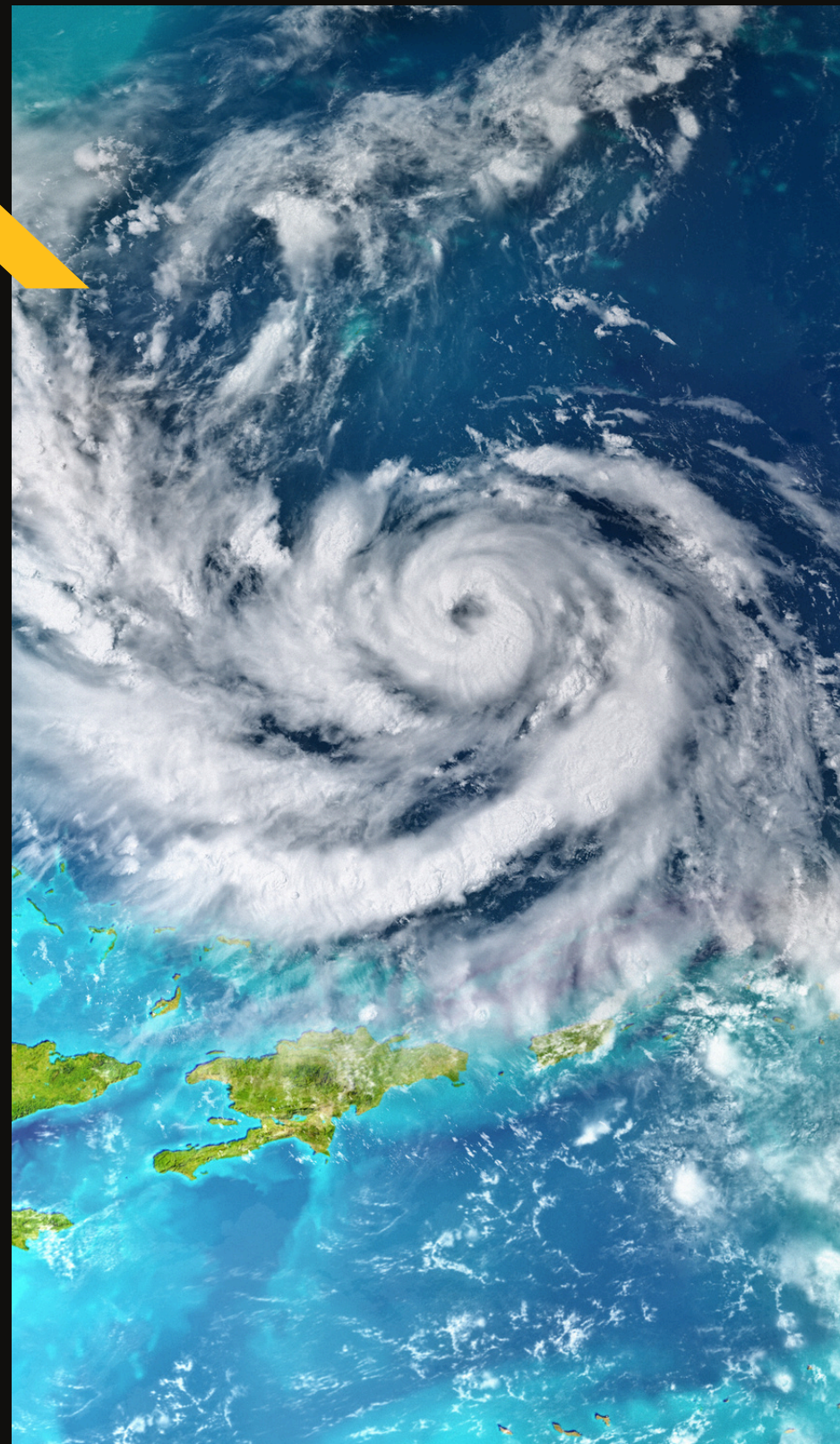
Low Cost Housing



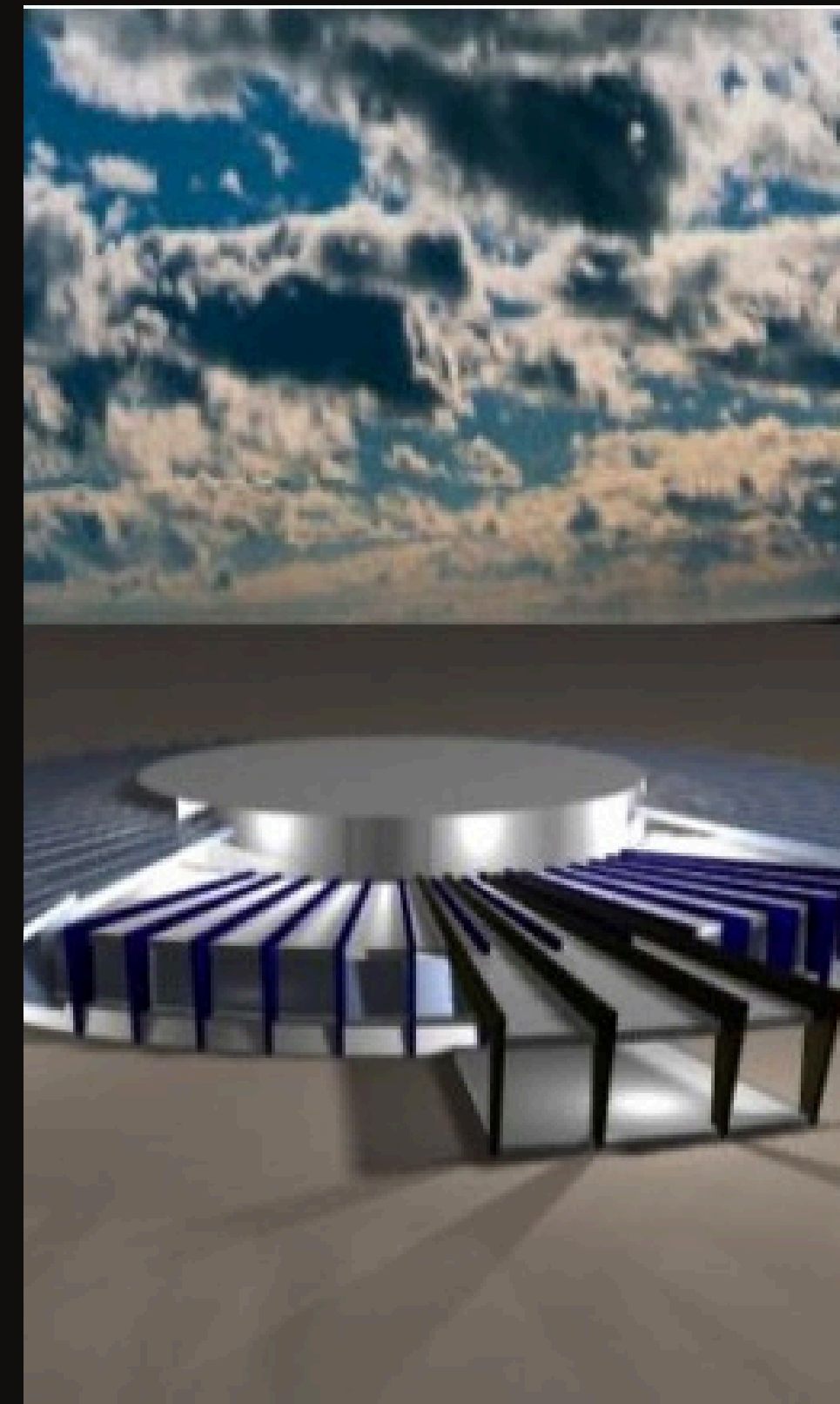
**Earthquake-
Resistant Buildings**

**Cyclone & Typhoon
Proof Dwellings**

USES FOR
cellate ■■■

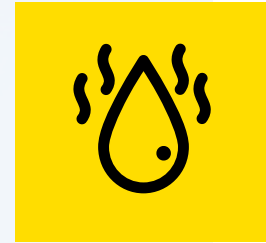


**Modern, Load-
Bearing, Minimally
Supported Structures.**



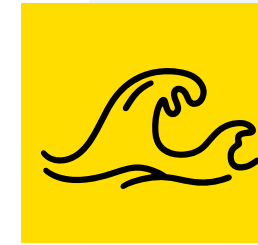
**Residential,
Commercial &
Industrial Buidlings**

SITUATIONAL USES

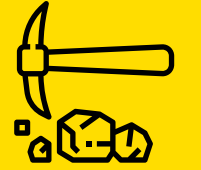


Salt slurry &
waste water
treatment works

Sea retaining
walls



Mining &
tunnel walls



Strata
stabilisation



Traffic
junctions &
roads



Foundations for
coastal areas



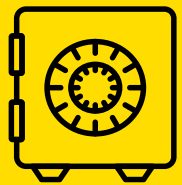
cellate



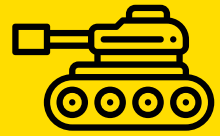
Actively seismic
hazardous areas



Bank Vaults



Heavy-wear military
vehicles, aircraft
hangers & aprons



Volatile chemical &
explosive storage



WORKING WITH **cellate** ■■■■

“ Cellate offers a full turnkey solution which encompasses Design, Funding, Construction, Project Management and On-going Maintenance.

- **Cellate trains personnel** in precast fabrication and erection of the finished panels.
- **Cellate can provide just the fibre steel technology** to those organisations that already have the management and project execution expertise required.

OR

- **Cellate Turnkey solution** is available to all project owners, and they can be either private contractors or governments and the solution provides:

1

A Single Point of Accountability

2

Cost & Time Efficient Construction

3

Reduced Risk

4

Quality Assurance

5

Convenience

Fully funded Community based Construction and Infrastructure Projects





WORKING WITH cellate



Cellate offers exclusive full project funding which provides total project underwriting and funding for turn key projects

Cellate is a party to the Starlight Consortium Global Project Funding Initiative ("GPFI").

- The GPFI© is underwritten by gold bullion, owned by Starlight Consortium.
- Project Developers/Investors pay a "project mobilisation fee" (a minimum of US\$ 10 million), to Cellate to obtain access to the benefits offered by the GPFI©.
- Cellate invests the Project Mobilisation Fee into the GPFI©, a risk-free, small capital Private Placement Program that enables Project Developers/Investors to fund and own their projects debt-free while maintaining 100% equity ownership.
- Project Developers/Investors must complete the Cellate/GPFI© Participation Process and Procedure.
- Cellate can arrange full asset management for each Project through New Horizon Bank PLC





If you would like to discuss your project or your funding requirements



Complete the Contact Form on our website

www.cellateau.com

OR



Give us a call

+(61) 4 1066 2844

cellate ■ ■ ■ ■